

General guideline for installing license of ISee!

This guideline is written to assist users of the licensed version of ISee! to install the software. This guideline shall not be used for any other purpose. For more information, please see <http://zscherpel.info/ic> or contact uwez@bam.de by email. The free version of ISee! "ic-free.exe" does not require any license and is fully functional; the only disabled functions are the storage of raw images and data sets. Only if you need one of these 2 features, a license key and the licensed program version is required.

To obtain a license, the following step shall be follow:

1. Double click the application file entitled "ic" (full name "ic.exe"). Please see Figure 1.
2. A dialog box will occur stating "Unable to Find a Valid License!" Please see Figure 2 & 3.
3. Click ok and go to Install license on top left hand corner and click Install license. Please see Figure 4.
4. Copy the generated activation sequence and email to uwez@bam.de. The complete activation sequence consists of exactly 24 hexadecimal byte codes! (Please send only the codes, not an image!)

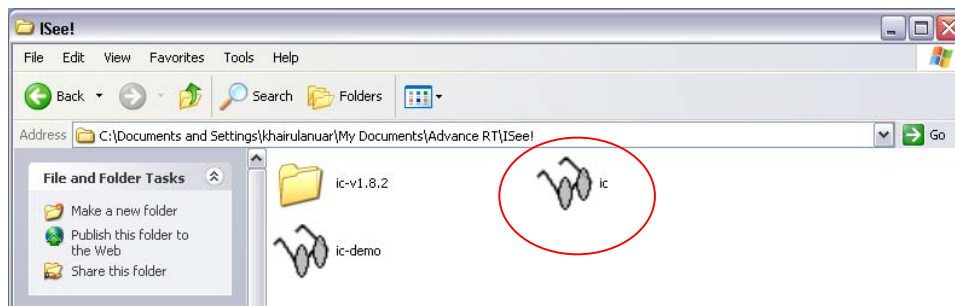


Figure 1: The Folder which contain IC software

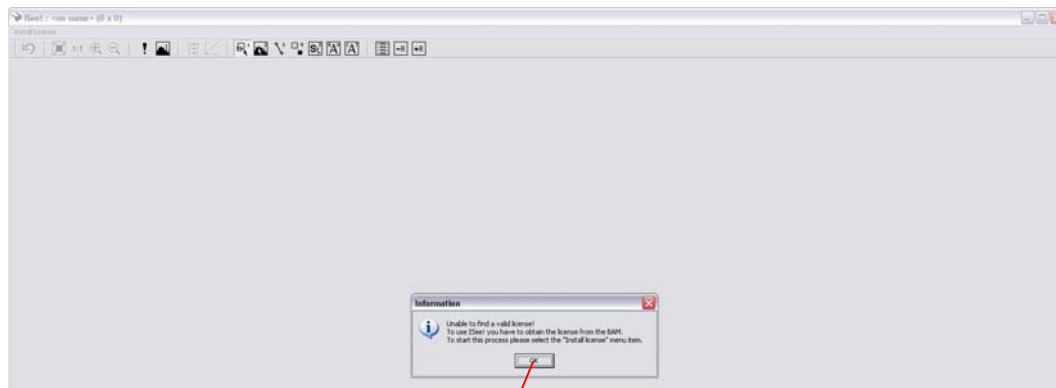


Figure 2: Dialog box stating invalid license after double-click on the ic.exe icon

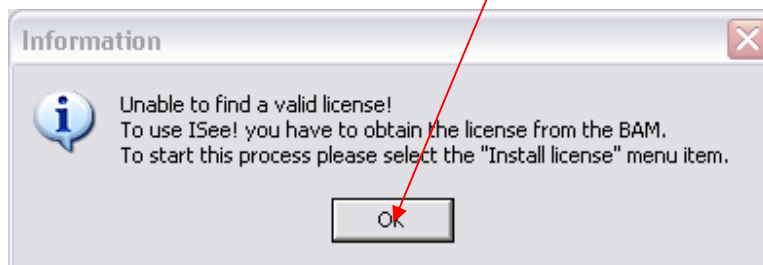


Figure 3: The dialog box



Figure 4: Click Install Licence

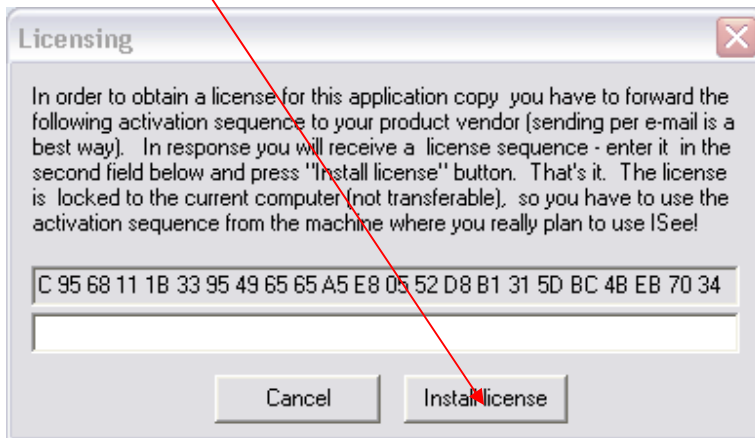


Figure 5: Copy the code and send it to uwez@bam.de

In Figure 5 not all 24 byte sequences are shown (only 22,5 bytes are visible, the first 1,5 bytes are not displayed!). Please ensure that ALL 24 bytes are marked and send completely to uwez@bam.de. This behavior is normal and depends on the font size setting of your PC. If you use standard European Microsoft settings, all bytes should be directly visible.

Please use in your email the following reference:

Activation sequence for ISee! software from

Finally, copy the license code you will receive per email from uwez@bam.de into the empty line in Fig. 5 and press the button "Install license". You are done and the full version of ISee! will work.

Dr. Uwe Zscherpel
BAM 8.3
21.07.2012